



White County Board of Commissioners
Finance Department
1235 Helen Highway
Cleveland, GA 30528

March 8, 2023

Request For Bids

Transfer Station Push Wall

The White County Board of Commissioners is seeking bids from contractors for the repair of the White County Transfer Station Push Wall, located at 670 Industrial Blvd, Cleveland, GA 30528:

Scope of Work:

- For specifications see attached Appendix A
- Project must be completed before April 30, 2023
- Transfer Station will be closed from 4pm Saturdays until 8am Mondays. Project **must be** completed in one weekend during these closed hours.

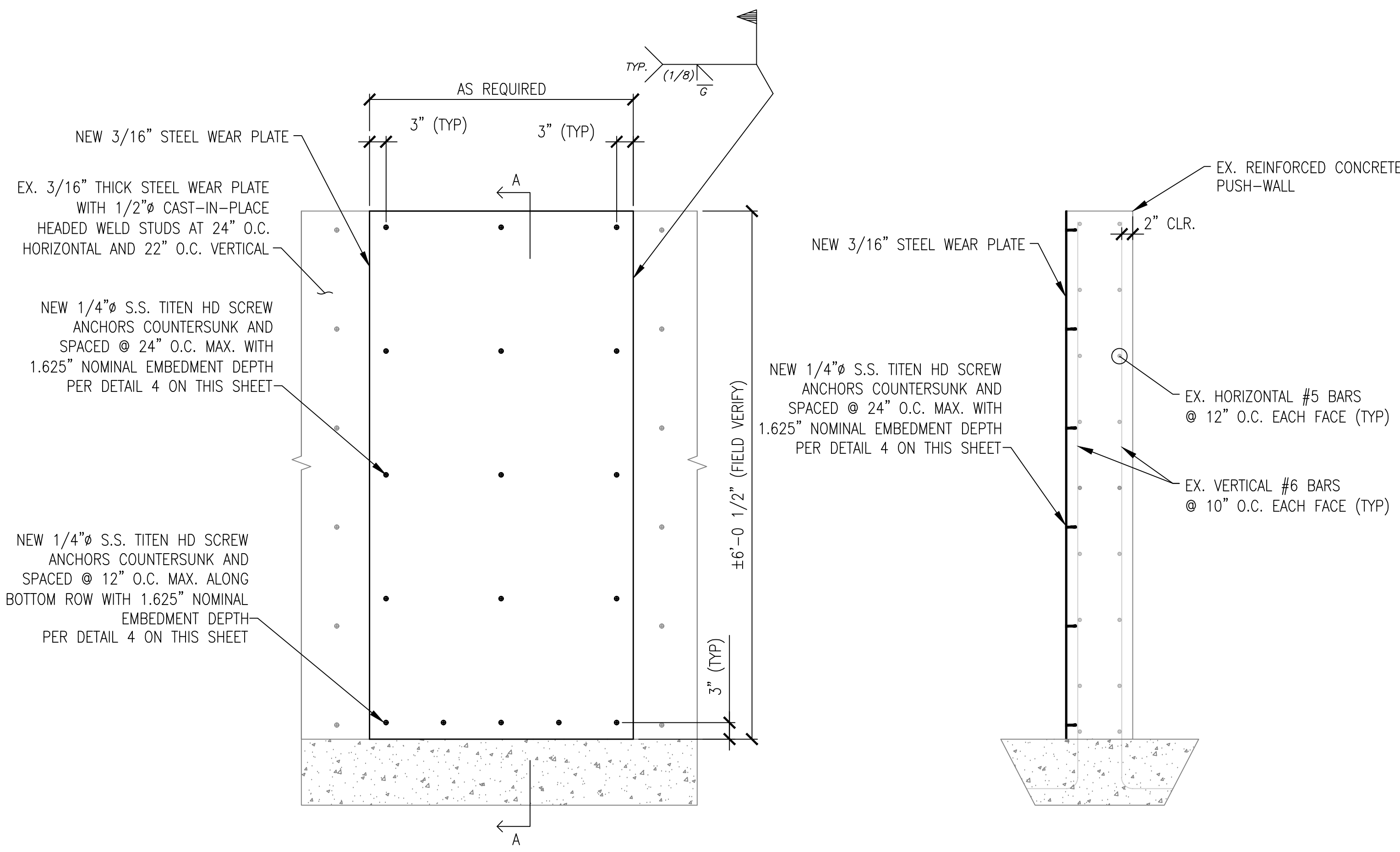
Questions regarding this bid request should be directed to Harry Barton, White County Planning/Solid Waste at (706) 865-6768.

General liability insurance and worker's compensation insurance will be required of awarded vendor. A current and valid Certificate of Insurance, W-9 and E-Verify must be submitted to the White County Board of Commissioners before project begins. Awarded vendor must comply with any Federal, State and/or Local regulations and laws.

Bids are irrevocable for a period of 60 calendar days after the bid deadline unless White County consents to a different time period. White County reserves the right to accept or reject any and/or all bids.

The bids must be submitted no later than 2pm on Friday, March 24th, 2023. Bids can be sent via email, mail, or hand delivered to Misti Byrd, at the White County Board of Commissioners Office.

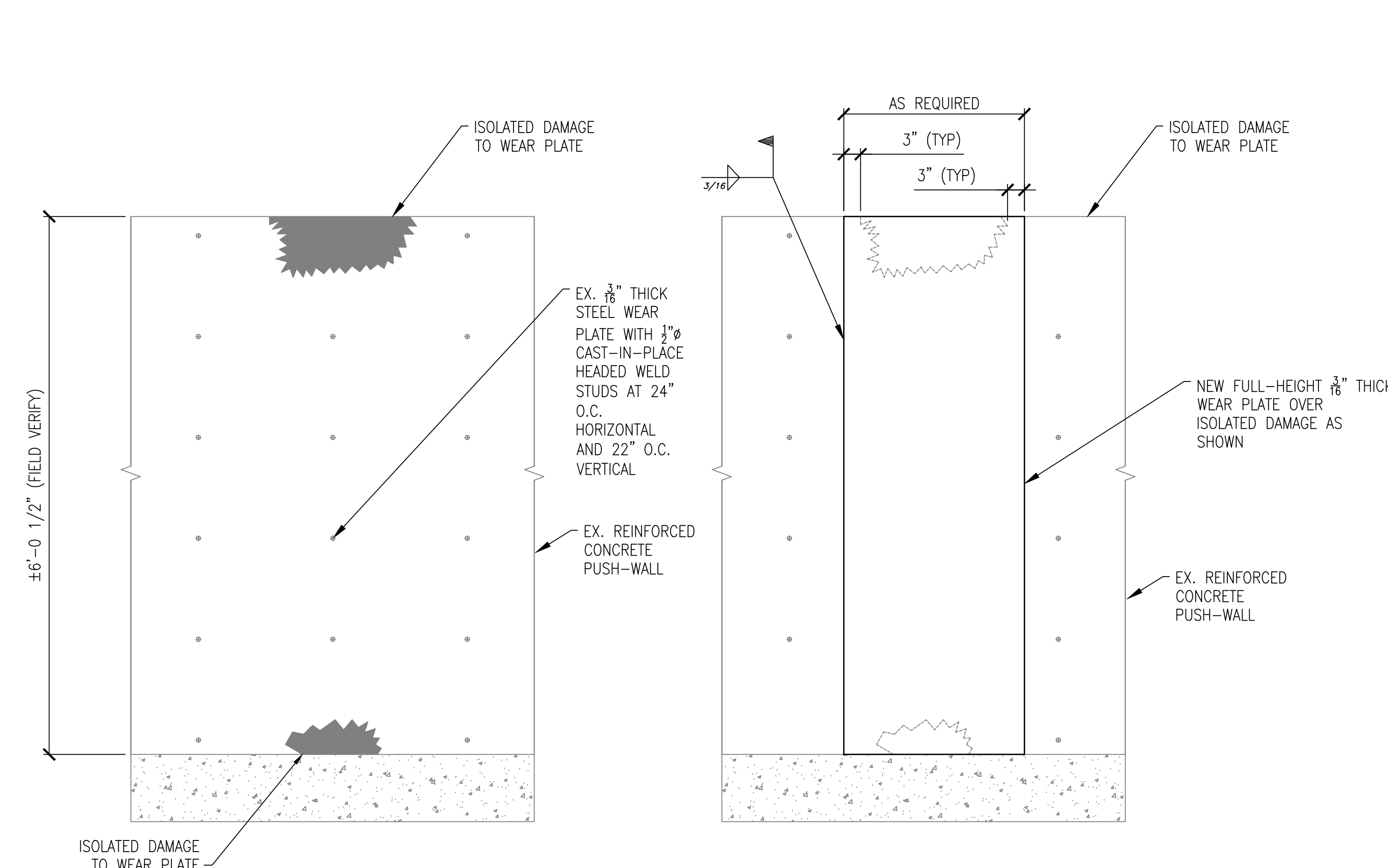
White Co Board of Commissioners
Attn: Misti Byrd, Purchasing Assistant
1235 Helen Highway
Cleveland, GA 30528
(706) 865-2235 – Office
mbyrd@whitecounty.net - Email



PUSH-WALL ELEVATION

SECTION A-A

- GENERAL PUSH WALL WEAR PLATE REPLACEMENT PROCEDURE:**
1. SELECT SUITABLE AREA OF WEAR PLATE TO BE REPLACED.
 2. DRILL-OUT EXISTING CAST-IN PLACE 1/2" Ø HEADED WELDED STUDS AND THEN CUT AND REMOVE EXISTING 3/16" STEEL WEAR PLATE.
 3. INSPECT CONCRETE FOR ANY DAMAGE AND REPAIR AS REQUIRED.
 4. INSTALL NEW WEAR PLATE AS SHOWN.



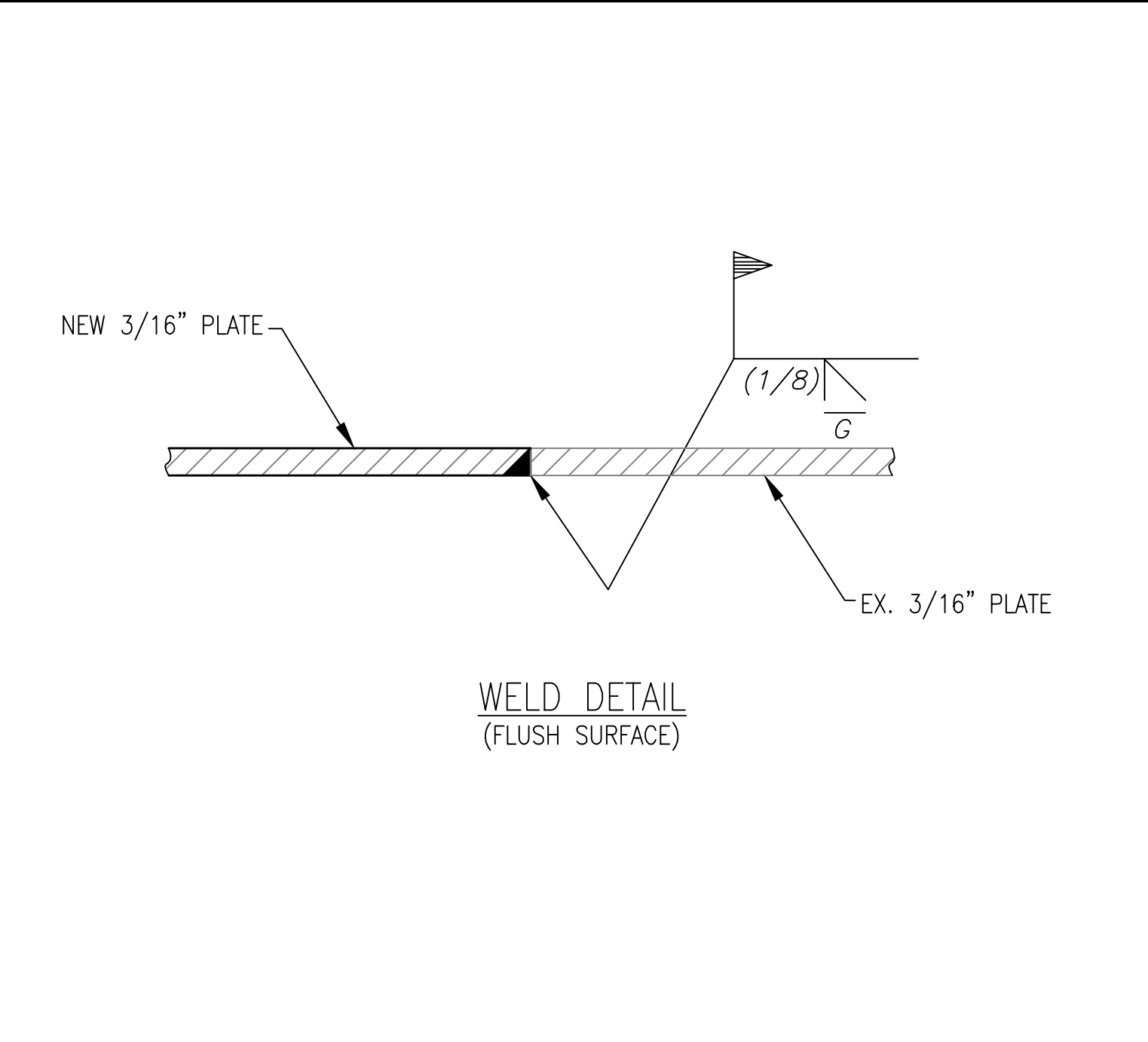
EXISTING PUSH-WALL ELEVATION

REPAIRED PUSH-WALL ELEVATION

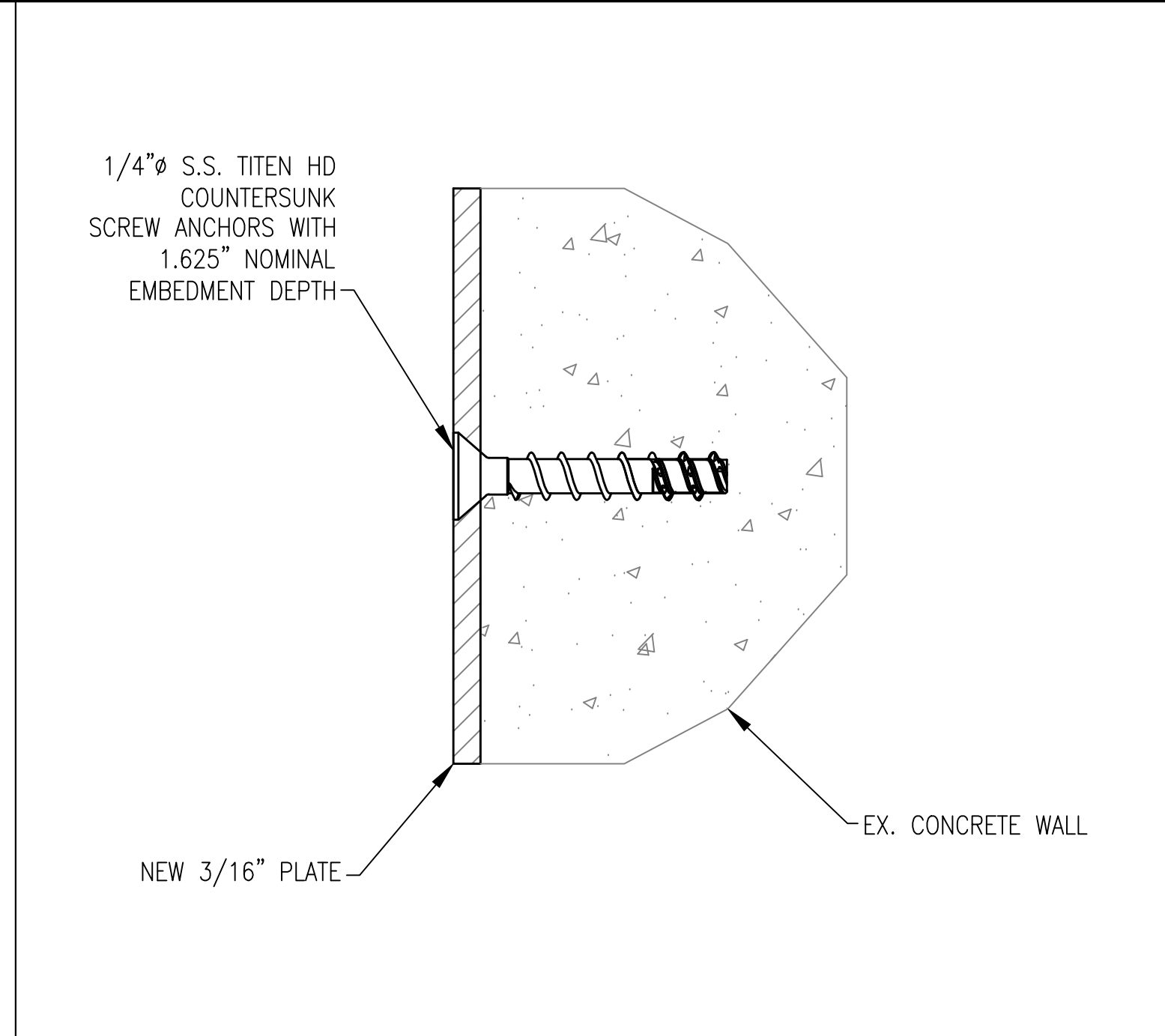
- GENERAL PUSH-WALL WEAR PLATE REPAIR PROCEDURE:**
1. SELECT SUITABLE AREA OF WEAR PLATE TO BE REPAIRED.
 2. REMOVE ANY DEBRIS FROM BEHIND EXISTING WEAR PLATE, AS APPLICABLE.
 3. CUT AND REMOVE ANY EXISTING DEFORMED PLATE TO FACILITATE THE INSTALLATION OF REPAIR COVER PLATE.
 4. INSTALL NEW WEAR COVER PLATE AND WELD TO EXISTING WEAR PLATE AS SHOWN.

1 OPTION 1: TYPICAL PUSH-WALL WEAR PLATE REPLACEMENT DETAIL
SCALE: N.T.S.

2 OPTION 2: TYPICAL PUSH-WALL WEAR PLATE REPAIR DETAIL
SCALE: N.T.S.



3 TYPICAL WEAR PLATE REPLACEMENT JOINT DETAIL
SCALE: N.T.S.



4 TYPICAL SCREW ANCHOR DETAIL
SCALE: N.T.S.

GENERAL NOTES

- 1.0 THE CONTRACTOR SHALL VERIFY ALL EXISTING CONDITIONS, DIMENSIONS AND ELEVATIONS BEFORE STARTING WORK OR FABRICATION.
- 1.1 CONTRACTOR IS RESPONSIBLE FOR ALL MEANS, METHODS, TECHNIQUES AND PROCEDURES OF CONSTRUCTION.
- 1.2 ALL WORK SHALL CONFORM TO APPLICABLE FEDERAL, STATE AND LOCAL LAWS.
- 1.3 REVIEW OF SHOP DRAWINGS AND OTHER SUBMITTALS BY THE STRUCTURAL ENGINEER DOES NOT RELIEVE THE CONTRACTOR OF THE RESPONSIBILITY TO REVIEW AND CHECK SHOP DRAWINGS BEFORE SUBMITTAL TO THE STRUCTURAL ENGINEER. THE CONTRACTOR REMAINS SOLELY RESPONSIBLE FOR ERRORS AND OMISSIONS ASSOCIATED WITH THE PREPARATION OF SHOP DRAWINGS AS THEY PERTAIN TO MEMBER SIZES, DETAILS AND DIMENSIONS SPECIFIED IN THE CONTRACT DOCUMENTS.
- 1.4 A PRE-CONSTRUCTION MEETING WITH REPRESENTATIVES FROM THE OWNER, WILKES ENGINEERING GROUP LLC AND ANY CONTRACTORS PERFORMING THE WORK IS REQUIRED TO REVIEW THE PROJECT SCOPE OF WORK, REPAIR OBJECTIVES AND THE CONTRACTOR'S PROPOSED MEANS AND METHODS TO FACILITATE THE REPAIR.
- 1.5 ALL STRUCTURAL STEEL CONSTRUCTION SHALL CONFORM TO THE AMERICAN INSTITUTE OF STEEL CONSTRUCTION INC. "STEEL CONSTRUCTION MANUAL" LATEST EDITION.
- 1.6 UNLESS NOTED OTHERWISE, ALL STRUCTURAL STEEL PLATE SHALL CONFORM TO ASTM A36.
- 1.7 WELDING SHALL BE DONE BY CERTIFIED WELDERS AND SHALL CONFORM TO AWS D1.1 "STRUCTURAL WELDING CODE-STEEL," LATEST EDITION. ALL WELDING ELECTRODES SHALL BE E70XX.

REV	REVISIONS DESCRIPTION	DATE
0	ISSUED FOR CONSTRUCTION	12/22/22
1	COMPLETE REVISION	3/5/23
2	REVISED NOTE 1.4	3/8/23



TYPICAL PUSH-WALL REPAIR DETAILS

DESIGNED BY: LJW
 DRAWN BY: LJW
 REVIEWED BY: LJW

DATE: 7/14/2022

WHITE COUNTY TRANSFER STATION
 670 INDUSTRIAL BLVD.
 CLEVELAND, GA 30528

THIS DRAWING, AS AN INSTRUMENT OF SERVICE, IS AND SHALL REMAIN THE PROPERTY OF WILKES ENGINEERING GROUP LLC AND SHALL NOT BE REPRODUCED, PUBLISHED OR USED IN ANY WAY WITHOUT THE PERMISSION OF WILKES ENGINEERING GROUP LLC.



PROJECT #: J221053
 DRAWING #: J221053_B.DWG
 SHEET NUMBER:
S-100
 SHEET SIZE: ARCH D - 24x36